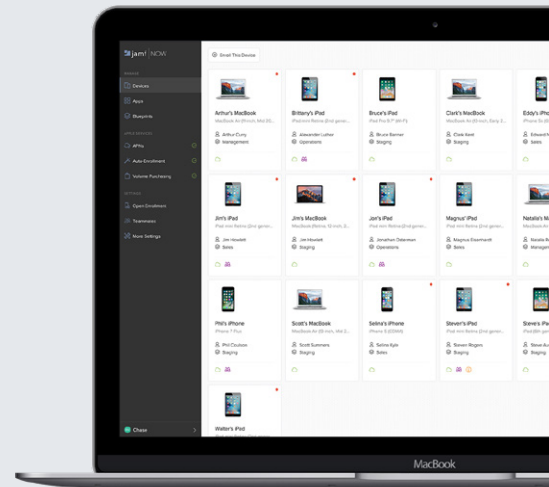


# Mobile device management focused on small and medium business

Set up, Manage, Secure.



## Why Jamf Now?

Jamf Now is simple, straightforward and easy to manage.



### Setup

Without a management solution it can take a surprising amount of time to set up all of your Apple devices at work. With Jamf Now you can remotely configure devices quickly and easily.



### Manage

Device management is an ongoing task. Make it as turnkey as possible by leveraging Jamf Now to deploy apps, view device details and get a 360-degree view of your inventory.

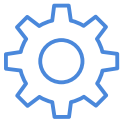


### Secure

Use Jamf Now to ensure sensitive company information your employees access remains secure. Remotely enforce passcodes, encryption and even lock or wipe devices.



## Features of Jamf Now:



### Automatic Setup

Automate device enrollment to eliminate tedious manual setups.



### Device Security

If a device is lost or stolen, it can be remotely locked or wiped completely.



### Wifi Settings

Configure your devices to automatically join your secure wireless networks.



### Device Inventory

Keep track of device settings with current details and status reports.



### App Distribution

Distribute free apps or ones purchased through Volume Purchasing.



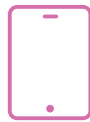
### Email Setup

Automatically configure company email accounts to all of your devices.



### Blueprints

Create multiple Blueprints to define different settings and apps for different devices within your deployment.



### Single App Mode

Lock your supervised iOS or iPadOS device to a single app to focus the device for a specific need such as for point-of-sale or a kiosk in retail locations.



### Custom Apps & Profiles

Jamf Now gives you even more flexibility with the ability to deploy custom applications and profiles in the Jamf Now Plus Plan.



[www.jamf.com](http://www.jamf.com)

© 2002-2020 Jamf, LLC. All rights reserved.

To learn more about how Jamf Now can support your Apple device deployments, contact your Jamf Authorized Reseller.